

Make-up Data for Mr. Freeze

Complete the question packet for Mr. Freeze using the **made-up** data provided. (As a result of the made-up data, some of your results may be a bit weird.) Show your work – completing the make-up packet is about the *process* used rather than the final values.

Tunnel Length: 60 m

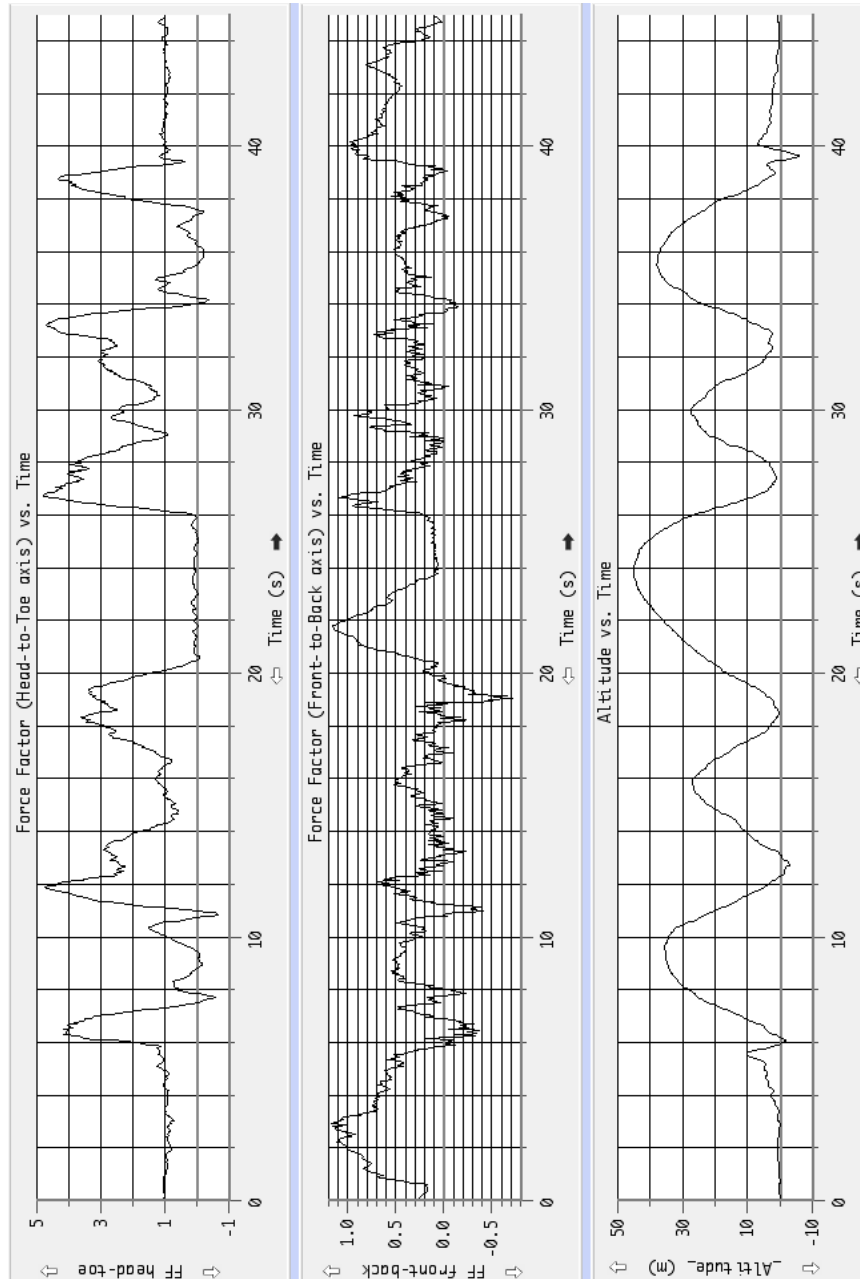
Angle to bottom of train at point F: 32° (As measured from the end of the bridge.)

Angle to point X: 10°

Angle to point A: -7°

Time to fall from F to X: 2.0 seconds

Mr. Freeze data from the 3rd to last car in the train



Lower resolution Quicktime Movie (3.2 MB): http://www.slapt.org/resources/sixflags/ridemovies/Mr_Freeze.mov

Higher resolution Quicktime Movie (229 MB): <http://www.slapt.org/resources/sixflags/ridemovies/Freezelg.mov>